



MATANUSKA-SUSITNA BOROUGH
Community Development
Land & Resource Management Division
350 East Dahlia Avenue
Palmer, Alaska 99645

MATANUSKA-SUSITNA BOROUGH
PUBLIC NOTICE

Type: Classification (MSB008307)

Tax ID: 27N05W18A001

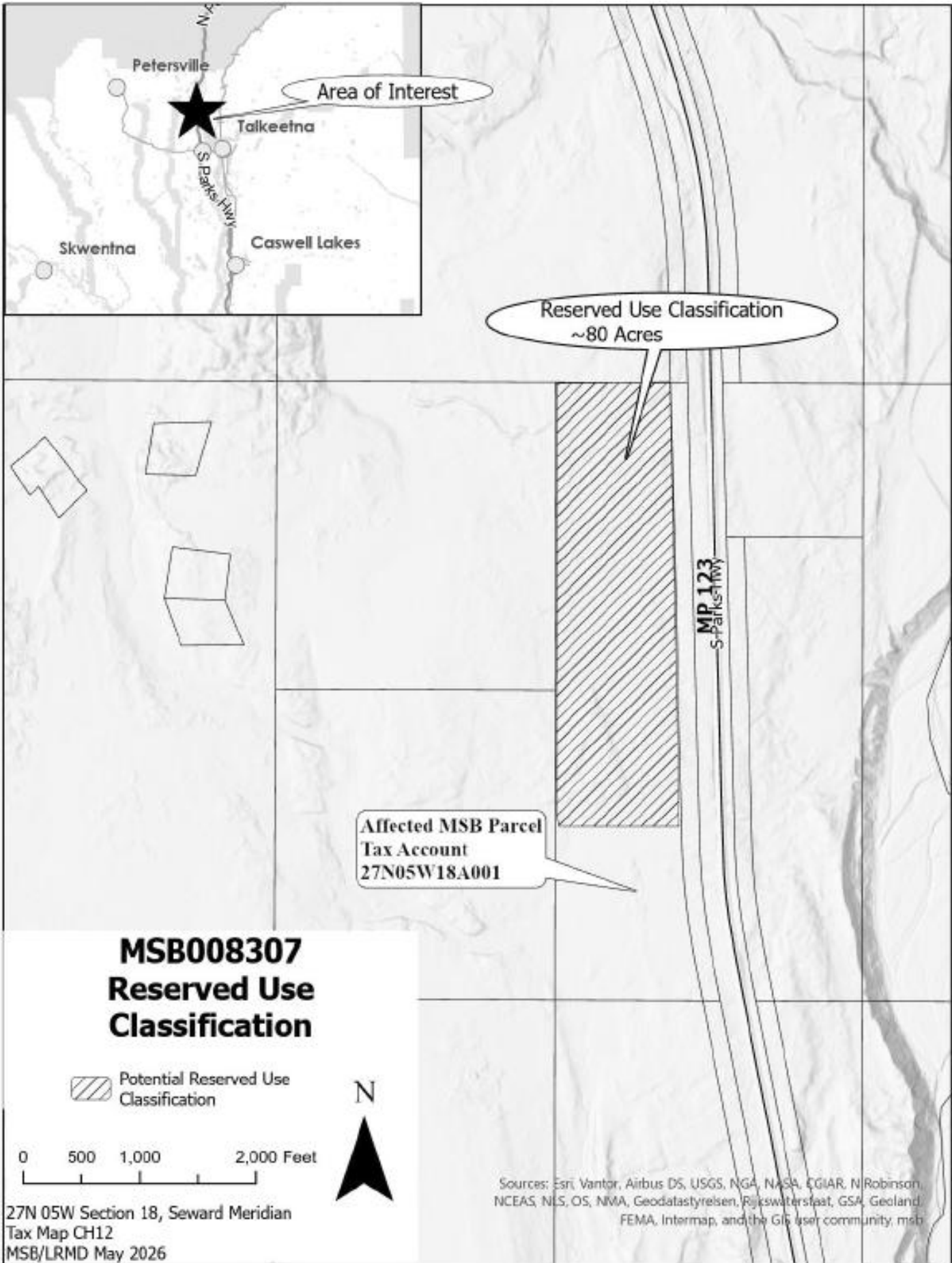
In response to the Matanuska-Susitna Borough Assembly's direction, the Land & Resource Management Division has identified a Borough-owned parcel suitable for future development as a shooting range at Milepost 123.5 Parks Highway (Tax ID 27N05W18A001). Land Management proposes to classify the land as Reserved Use for a shooting range. A location map is on the reverse side of this notice.

Supporting material is available for public inspection by appointment only during normal business hours on the 2nd floor of the Borough Building in the Land & Resource Management office or visit the Public Notice Section on the Borough's web page, www.matsu.gov. Public comments are invited on this request. If you have any comments, please mail or deliver them to the Borough offices at the address above no later than **June 29, 2026**. If you have questions about this request call Peter Burton at 907-861-7847 between 8 am – 5 pm, or you can send an e-mail to: LMB@matsugov.us (please refer to **MSB008307** when submitting comments).

Comments: _____

Signature: _____

(If you need more space for comments please attach a separate sheet of paper.)
*This public notice & request for comments is in compliance with MSB Code 23.05.025



27N 05W Section 18, Seward Meridian
Tax Map CH12
MSB/LRMD May 2026