



MATANUSKA-SUSITNA BOROUGH
Community Development
Land & Resource Management Division
350 East Dahlia Avenue
Palmer, Alaska 99645

MATANUSKA-SUSITNA BOROUGH
PUBLIC NOTICE

Type: Public Utility Easement (MSB008306)

Tax ID: 7651000T005

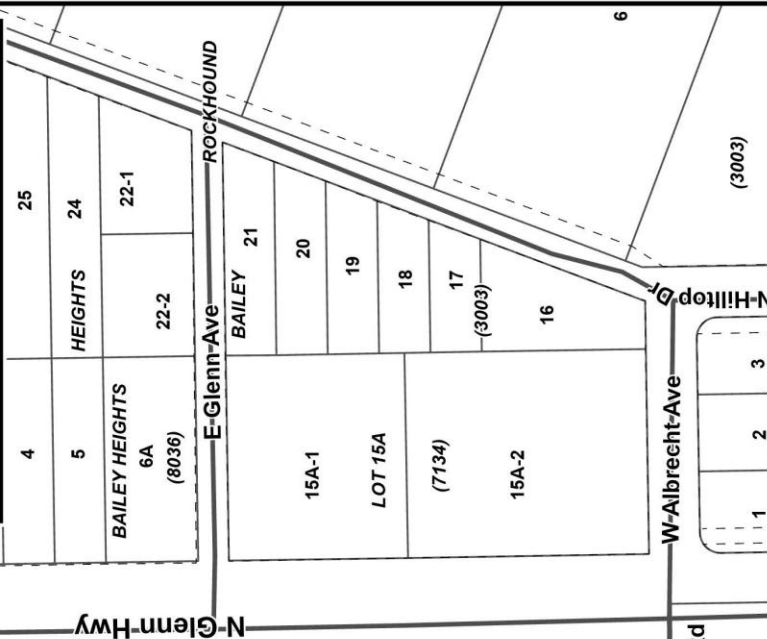
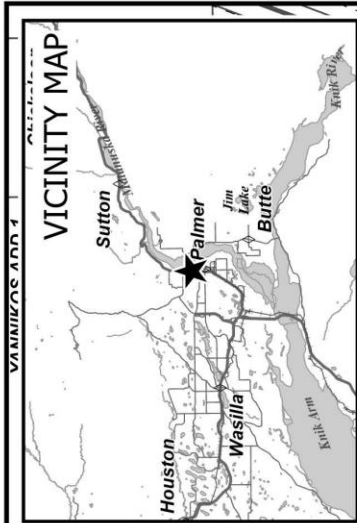
The Matanuska-Susitna Borough, Land & Resource Management Division received a request from Matanuska Electric Association (MEA) for public utility easements on Borough-owned property known as Tract 5, Cedar Hills Subdivision Unit No. 2, Phase 1, 2017 (tax account number 7651000T005). This is the location of the new Palmer Public Safety Building, Station 3-9. The utility easements will be used to service the new building.

Supporting material is available for public inspection by appointment only during normal business hours on the 2nd floor of the Borough Building in the Land & Resource Management office or visit the Public Notice Section on the Borough's web page, www.matsu.gov. Public comments are invited on this request. If you have any comments, please mail or deliver them to the Borough offices at the address indicated above, no later than **July 5, 2026**. If you have questions about this request or would like to schedule an appointment to view supporting materials, call Jill Irsik at 907-861-7866 between 8 am - 5 pm or you can send an e-mail to: **LMB@matsu.gov** (please refer to **MSB008306 Utility Easement / Station 3-9 when submitting comments**).

Comments: _____

Signature: _____

(If you need more space for comments please attach a separate sheet of paper.)
*This public notice & request for comments is in compliance with MSB Code 23.05.025



**Affected MSB Parcel
ID: 7651000T005**

CEDAR HILLS
UNIT 2 PH
1 2017

PROPOSED UTILITY
ESMT 510'x20'

SECONDARY SERVICE
50'x20'

Station 3-9

MSB #008306
Proposed Utility Easement
Station 3-9

S T18N R02E Sec. 29 - Tax Map PA05
MSB/LRMD May 2026

49

TR 4

17

18

1

2

3

4

5

6

7

8

9

10

11

12

23

22

21

20

19

18

17

16

15

14

13

9

18

17

16

15

14

13

12

11

10

9

8

7

6

5

4

23

22

21

20

19

18

17

16

15

14

13

12

11

10

9

8

7

6

9

18

17

16

15

14

13

12

11

10

9

8

7

6

5

4

3

2

9

18

17

16

15

14

13

12

11

10

9

8

7

6

5

4

3

2

9

18

17

16

15

14

13

12

11

10

9

8

7

6

5

4

3

2

9

18

17

16

15

14

13

12

11

10

9

8

7

6

5

4

3

2

9

18

17

16

15

14

13

12

11

10

9

8

7

6

5

4

3

2

9

18

17

16

15

14

13

12

11

10

9

8

7

6

5

4

3

2

9

18

17

16

15

14

13

12

11

10

9

8

7

6

5

4

3

2

9

18

17

16

15

14

13

12

11

10

9

8

7

6

5

4

3

2

9

18

17

16

15

14

13

12

11

10

9

8

7

6

5

4

3

2

9

18

17

16

15

14

13

12

11

10

9

8

7

6

5

4

3

2

9

18

17

16

15

14

13

12

11

10

9

8

7

6

5

4

3

2

9

18

17

16

15

14

13

12

11

10

9

8

7

6

5

4

3

2

9

18

17

16

15

14

13

12

11

10

9

8

7

6

5

4

3